

# TITANIUM WOVEN WIRE MESH

---



**TENDER WIRE MESH**

[www.woven-filtermesh.com](http://www.woven-filtermesh.com) | [Darth@tender-wriemesh.com](mailto:Darth@tender-wriemesh.com)

# Specifications

Titanium woven mesh is woven from non-magnetic titanium wires and is divided into black titanium woven mesh and white titanium woven mesh by its surface color. Black titanium woven mesh is made of pure titanium wire and is suitable for manufacturing ship and seawater titanium filter mesh; white titanium woven mesh is produced by weaving pure graphite wire after removing the graphite emulsion coating. It is suitable for manufacturing electrode mesh, titanium battery collecting mesh and fine chemical liquid filtering titanium mesh.

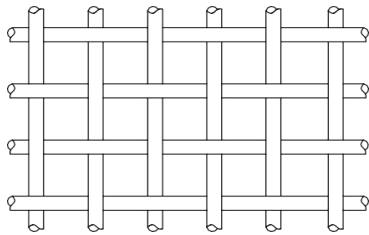
**Wire diameter:** 0.05–1 mm.

**Mesh:** 2–200 mesh.

**Width:** standard less than 2000 mm.

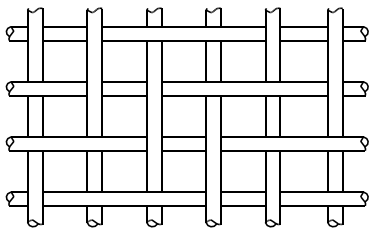
**Length:** 30 m rolls or cut to length, minimum 2 m.

## Weave Type



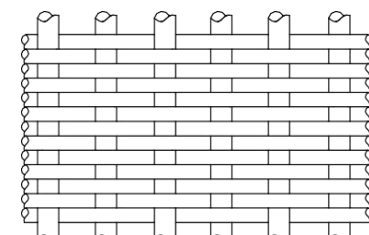
**Plain weave**

The simplest used type with square openings. It is woven by alternating the weft wire over and under the warp wire. It is often used for weaving coarse mesh and typically serves as the protection layer of coarse filtration and filter media.



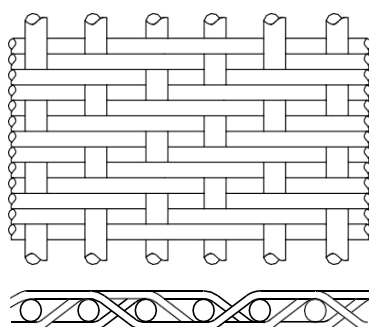
**Twill weave**

Each weft wire passes alternately over and under 2 warp wires, staggered on successive warps. It is generally used for weaving fine mesh and is suitable for fine filtration than plain weave.



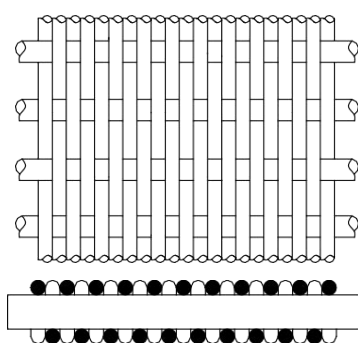
**Plain Dutch weave**

The diameter of the warp wire is bigger than the weft wire. During the weaving process, the finer weft wires are driven closer to form a tight filter medium. Typically, coarse mesh works as a reinforcing layer of the metal sintered mesh and the fine mesh as the filtration layer of the metal sintered mesh.



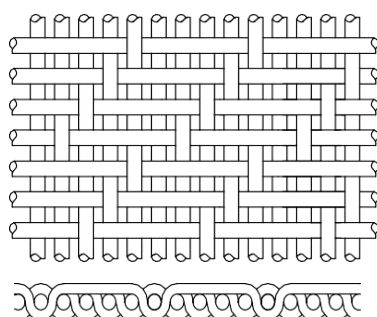
**Twill dutch weave**

It combines the Dutch and twill weaving process. Each warp wire passes over and under two fine weft wires. Weft wires are driven closer to each other, forming a tight woven mesh with tapered or wedge-shaped openings. In addition, it also forms smaller opening sizes. Typically, coarse mesh works as a reinforcing layer of the metal sintered mesh and the fine



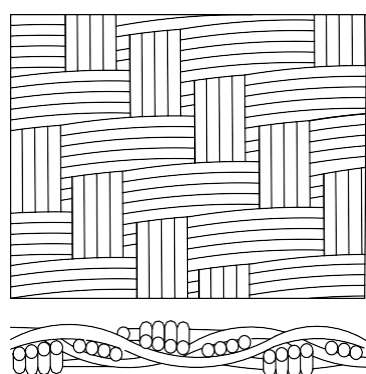
**Reverse dutch weave**

It is in a reverse of the plain Dutch weave wire arrangement using larger warp wires and smaller weft wires. It adopts smaller warp wires to offer a tight mesh structure for filtration and larger weft wires deliver higher strength for the woven mesh to extend its service life. Polymer continuous filter belts are generally produced with reverse Dutch weave.



**Five-heddle weave**

Every warp wire alternately up and down each single and four weft wires and vice versa. It provides a rectangular opening and offers high flow rates and good mechanical stability. It is widely used in drainage filtration, undercurrent filtration, and paper-making and chemical packing dehydration.



**Multiplex weave**

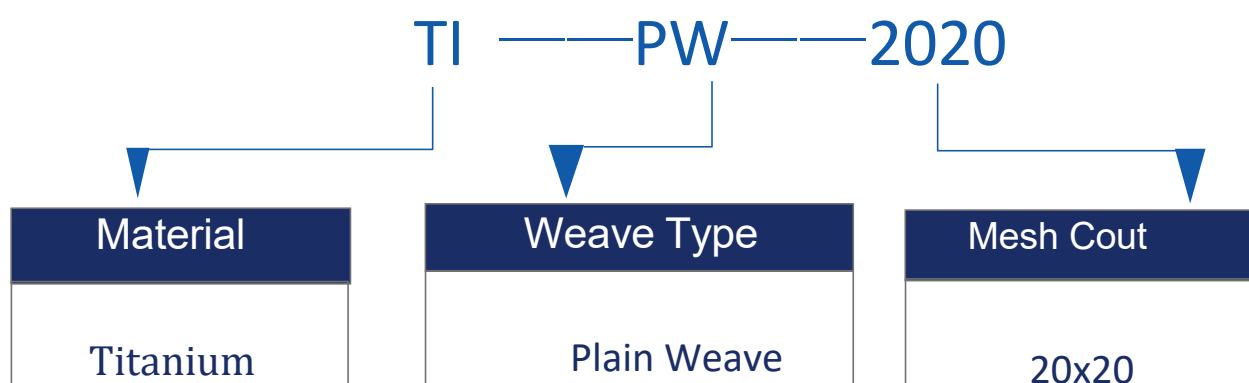
It is a relatively complex metal wire mesh or textile structure, characterized by the interweaving of multiple layers or strands of silk threads to form a more stable, durable, or functionally specific structure. Commonly used for high demand applications such as filtration, reinforcement, decoration, etc

# Customized Design and Production Planning

TENDER WIRE MESH is the largest manufacturer of metal braided wire mesh in China.

We Having over 20 professional PhDs in metal materials, responsible for the design department, possessing significant design and production capabilities provide customized production for all customers

Just tell us the material, weaving method, and mesh you want, and we will provide you with a quotation, such as the following **a simple code like this can be used**



Besides, if you already have relevant product designs, you can tell us directly. We can directly produce for you  
Or, tell me your purpose, filter media, and other information so that we can design and produce for you

Of course, as an excellent manufacturer, it is necessary to have sufficient spot inventory to meet the timely needs of customers.  
We can achieve fast delivery for the goods listed in the commonly used specifications table below.

**Standard specification table**

Matetial	Mesh (Wires/in.)	Wire Diameter (in.)	Width of Opening (in.)	Open (%)	Area
Titanium	4 × 4	0.0320	0.2180	76.0	
	4 × 4	0.0350	0.2150	74.0	
	6 × 6	0.0320	0.1350	65.6	
	7 × 7	0.0250	0.1180	68.2	
	8 × 8	0.0320	0.0930	55.4	
	9 × 9	0.0320	0.0790	50.6	
	10 × 10	0.0350	0.0650	42.3	
	10 × 10	0.0300	0.0700	49.0	
	10 × 10	0.0250	0.0750	56.3	
	12 × 12	0.0110	0.0723	75.3	
	14 × 14	0.0160	0.0550	60.2	
	16 × 16	0.0060	0.0565	81.7	
	18 × 18	0.0100	0.0460	67.4	
	18 × 18	0.0110	0.0445	64.4	
	18 × 18	0.0160	0.0400	50.8	
	20 × 20	0.0030	0.0470	88.4	
	20 × 20	0.0200	0.0300	36.0	
	20 × 20 TW	0.0160	0.0340	46.2	
	24 × 24	0.0100	0.0320	57.9	
	24 × 24	0.0118	0.0299	51.4	
	26 × 26	0.0100	0.0290	54.9	
	30 × 30	0.0100	0.0233	49.0	
	32 × 32	0.0100	0.0210	46.5	
	35 × 35	0.0080	0.0206	51.8	
	40 × 40	0.0050	0.0200	64.0	
	40 × 40	0.0100	0.0150	36.0	
	50 × 50	0.0090	0.0110	30.3	
	50 × 50 TW	0.0040	0.0160	64.0	



# Quality Inspection

Product quality ownership is the most important concern for buyers.

TENDER WIRE MESH, We have strict quality testing for all products produced



**2D Plane Imager**



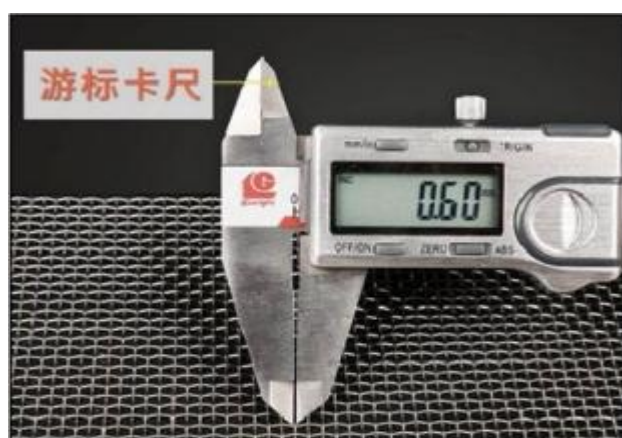
**Tensile Testing Machine**



**Hydrochloric Acid Corrosion Test**



**Spectral Analyzer**

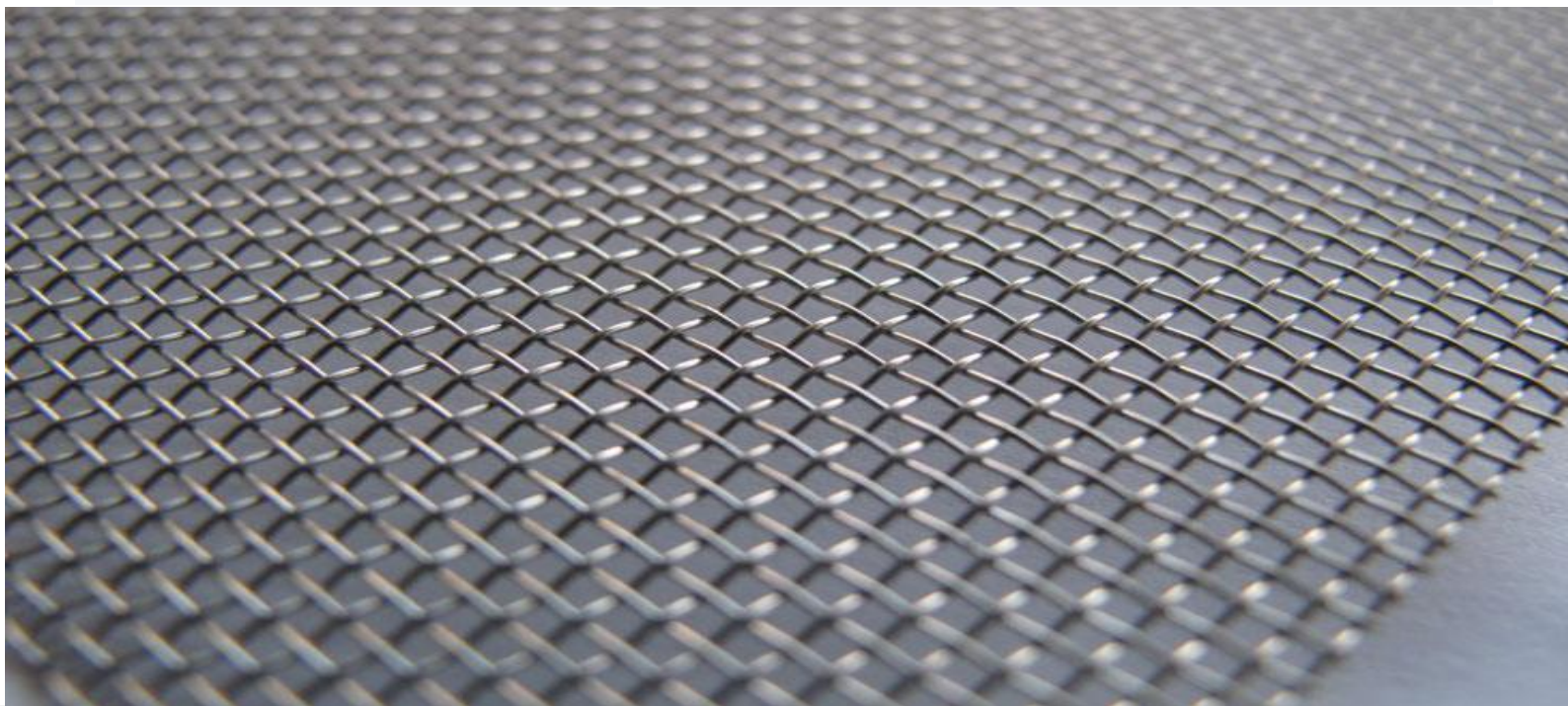


**Vernier caliper**



**Inch mesh mirror**

## Contact Us



TENDER WIRE MESH, It is the largest manufacturer of metal woven wire mesh in China.

The factory covers an area of 58000 square meters, with 600 sets of various automated machines, over 200 workers, and 20 professional doctoral engineers. We serve over 3000 customers annually and generate sales of 40 million US dollars.

Search for information on other wire mesh products

[www.tender-wiremesh.com](http://www.tender-wiremesh.com)

Please contact for quotation

E-mail: [Darth@tender-wiremesh.com](mailto:Darth@tender-wiremesh.com)

Whatsapp: +86 15588645515

Wechat: +86 15588645515